



**HIGHLIGHTERS Ivory/Beige** (Use under the brow bone and on the inside half of the lid)



Copper Beach \*



Crystalline †



White Sand\*\*



Moonstone \*



Sheer Pink †



Spun Silk \*



Bamboo \*\*



Tropical Sun \*\*



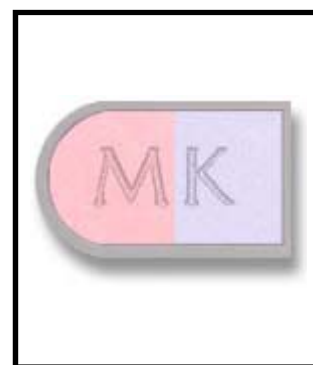
Goldenrod\*



Jade (light) \*



Safari Sunset (lt) \*



Cotton Candy †



Tutti-Frutti \*



Lagoon (lt) \*



Jungle (lt) \*

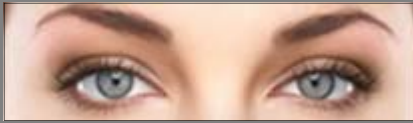


Blue Moon (lt) \*

† Frost

\* Shimmer

\*\* Matte



**MIDTONES Ivory/Beige** (Used over the outer half of the lid and in the crease)



Hazelnut †



Whipped Cocoa †



Rose Mist \*



Java (light) †



Double Espresso (lt) †



Woodland †

**MIDTONES Bronze/Ebony** (Used over the outer half of the lid and in the crease)



Cinnabar †



Whipped Cocoa †



Java (dk) †



Onyx (lt) \*

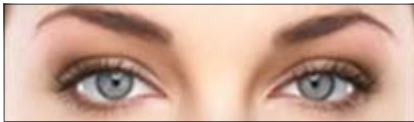


Woodland †

† Matte

\* Shimmer

All midtone colors can be used as accent colors depending on skin tone.



# Green or Hazel Eye Accent Colors

## Recommended Shades

**Recommended Eye Liners**

Sable      Bronze  
Violet      Charcoal



Hazelnut



Whipped Cocoa



Woodland



Double Espresso



Vintage Gold



Lucky Penny



Cinnabar



Gold Leaf



Safari Sunset (dk) \*



Virtual Violet



Fig



Storm †

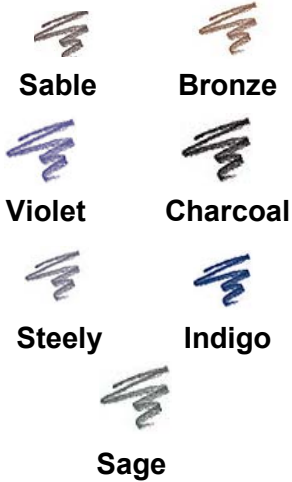
\* Recommended for Bronze/Ebony Skin Only    † Recommended as an eye liner.



# Brown Eye Accent Colors

## Recommended Shades

### Recommended Eye Liners



Hazelnut



Whipped Cocoa



Woodland



Rose Mist



Vintage Gold



Cinnabar



Lucky Penny



Gold Leaf



Sugarplum



Safari Sunset \*

\* Recommended for Bronze/Ebony Skin Only † Recommended as an eye liner.



## Brown Eye Accent Colors Cont'd

### Recommended Shades



Lagoon



Virtual Violet



Periwinkle



Fig



Double Espresso



Current Craze



Cranberry Ice



Jade



Rainforest



Jungle

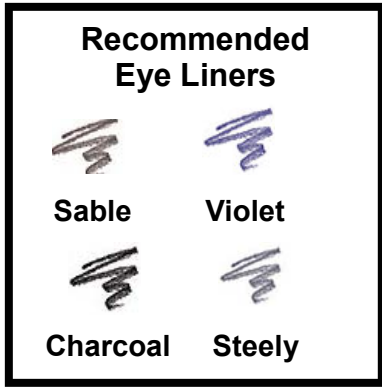


Storm †



## Gray Eye Accent Colors

### Recommended Shades



Hazelnut



Whipped Cocoa



Java



Double Espresso



Sugarplum



Onyx



Virtual Violet



Storm †

† Recommended as an eye liner.



# Blue Eye Accent Colors

**Recommended Eye Liners**

-  Charcoal
-  Bronze
-  Sable

## Recommended Shades



Hazelnut



Whipped Cocoa



Woodland



Safari Sunset (dk) \*



Lucky Penny



Cinnabar



Vintage Gold



Gold Leaf



Double Espresso



Storm †

\* Recommended for Bronze/Ebony Skin Only † Recommended as an eye liner.



## EYESICLES CRÈME-TO-POWDER EYE COLOR



Vanilla



Island Bronze



Pink Frost



**HIGHLIGHTERS Beige/Bronze** (Use under the brow bone and on the inside half of the lid)



Double Espresso (lt) \*\*



Goldenrod \*



Copper Beach\*



Moonstone \*



Rose Mist \*



Java (light) \*\*



Bamboo \*\*



Tropical Sun \*\*



Sugarplum †



Jade (light) \*



Safari Sunset (lt) \*



Gold Leaf \*



Tutti-Frutti \*



Lagoon (lt) \*



Jungle (lt) \*



Blue Moon (lt) \*

† Frost

\* Shimmer

\*\* Matte